

ENGINEER'S CERTIFICATE

STATE OF FLORIDA
COUNTY OF ST. LUCIE
I hereby certify that this plat is made from an actual survey made under my direction...

CERTIFICATE OF APPROVAL

This is to certify that this plat has been approved by the Board of County Commissioners of St. Lucie County, Florida.

Table with columns: CURVE DATA, M, A, B, L, T. Contains numerical data for various curve segments.

CERTIFICATE OF DEDICATION

STATE OF FLORIDA
COUNTY OF DADE
We, F.E. MACQUELLE, Jr. and E.J. MACQUELLE, respectively as President and Secretary of the RIVER PARK LAND COMPANY...

Witnesses: James E. Wood, Howard W. Poffenbarger. Subscribed and sworn to before me this 26th day of January, 1958.

ACCEPTANCE OF MORTGAGE

I, WILLIAM D. SHARRITT and MARY E. SHARRITT, his wife, Mortgagees, do hereby accept the attached plat of RIVER PARK UNIT FIVE...

ACCEPTANCE OF MORTGAGE

I, RUTH S. GLEN and HAROLD V. GLEN, her husband, Mortgagees, do hereby accept the attached plat of RIVER PARK UNIT FIVE...

ACCEPTANCE OF MORTGAGE

I, HENRY D. EPSTEIN as Trustee, Mortgagee do hereby accept the attached plat of RIVER PARK UNIT FIVE...

ACCEPTANCE OF MORTGAGE

We, GARDNER COWLES and JOHN E. HARDING, respectively as President and Secretary of the RIVER PARK LAND INVESTMENTS, INC. do hereby accept the attached plat of RIVER PARK UNIT FIVE...

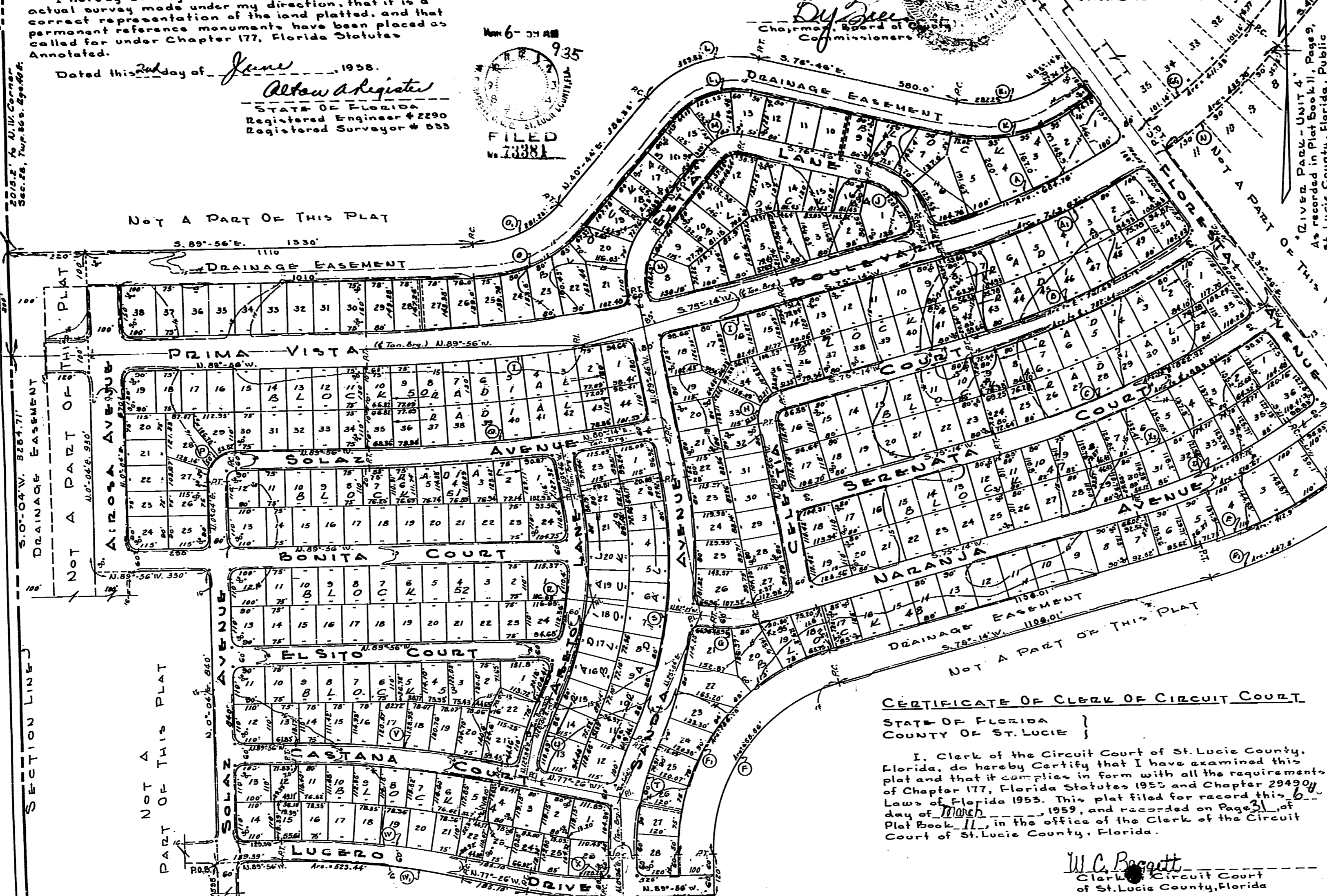


Table with columns: CURVE DATA, M, A, B, L, T. Contains numerical data for various curve segments.

NOTES

- 1. Irrespective of the foregoing dedication, title to all streets and alleys as shown hereon shall revert to St. Lucie River Land Company...

CERTIFICATE OF CLERK OF CIRCUIT COURT

STATE OF FLORIDA
COUNTY OF ST. LUCIE
I, Clerk of the Circuit Court of St. Lucie County, Florida, do hereby certify that I have examined this plat...

"RIVER PARK - UNIT FIVE"

DESCRIPTION

Commencing at the Southeast corner of Section 28, Twp. 36 S., Rge. 40 E., St. Lucie County, Florida, run thence S. 89°-41' E. along the south line of said Section 28, 600 feet...

ST. LUCIE COUNTY, FLORIDA.
Date: JUNE 10, 1958.

Scale: 1" = 200'